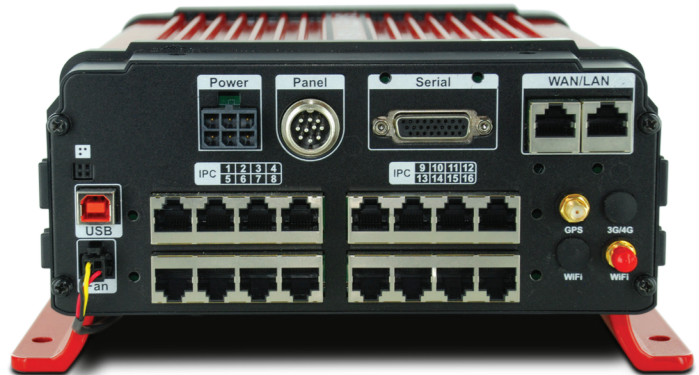


OBSERVER™ 4116 NVR

16-CHANNEL NETWORK VIDEO RECORDER



The Observer 4116 Network Video Recorder is an all IP-based solution, offering up to 16 channels of 1080p high definition recording, and dual hard drives for double the storage space. With 9 times greater resolution compared to standard surveillance systems, the Observer 4116 NVR delivers the ultimate in image quality and superior digital zoom capabilities.

OS SUPPORT

Linux 3.0.8

CAMERA CHANNELS

16 IP channels

VIDEO / AUDIO OUTPUT

1 channel

QUALITY SETTINGS

Adjustable 8 levels

RECORDING RESOLUTION

NTSC: 1080p @ 30 fps, 720p @ 30 fps

PAL: 1080p @ 30 fps, 720p @ 30 fps

STORAGE

2 × SATA II SSD (2 TB max each, 4 TB total)

or

2 × SATA II HDD (2 TB max each, 4 TB total)

Mirror Recording: 1 × SD card up to 256 GB max (optional)

RECORDING MODES

Continuous / scheduled / alarm

PRE-EVENT RECORDING

Configurable up to 60 minutes

POST-EVENT RECORDING

Configurable up to 30 minutes

ETHERNET

2 × RJ45 (10/100 M and 1000M)

WI-FI (ANTENNA REQUIRED)

Embedded module (802.11b/g/n)

GPS (BUILT-IN)

Antenna required

(date / time, vehicle speed, mapping data)

ACCELEROMETER

3-Axis (built-in)

INTERFACES

Front: 1 × USB 3.0 (type A), 1 × eSATA

Rear: 1 × USB 2.0 (type B), 2 × RS232, 2 × RS485

SENSORS

8 inputs, 2 outputs

POWER INPUT

8 ~ 36V DC, ACC

OPERATING TEMPERATURE

-14° F ~ 158° F (-10° C ~ 70° C)

-40° F ~ 158° F (-40° C ~ 70° C) (with heating module)

DIMENSIONS (W × H × D)

9.4 in × 4.5 in × 12.8 in
(238 mm × 115.5 mm × 324.6 mm)

CERTIFICATIONS

MIL-STD-810, IEC 60068, FCC, CE, EN50155
EMC, ISO7673

PART NUMBER

4116-NVR

