

# **SAFETY VISION<sup>®</sup>**

MOBILE VIDEO SURVEILLANCE SOLUTIONS

## **ARMORED VEHICLE MOBILE VIDEO SOLUTIONS**

**2020  
PRODUCT BROCHURE**





## ARMORED VEHICLE CAMERA SOLUTION BY SAFETY VISION

Safety Vision is an advanced mobile video provider dedicated to enhancing transportation security and safety. Armored vehicles transport extremely valuable cargo which requires heightened security for the assets and guards. Our products are designed to serve as a comprehensive solution through continuous recording in and around the vehicle, GPS tracking, on-board live look-in capabilities, and a number of accessories to cater to your unique needs.

### Advanced Features:

- ✓ Increase public and officer safety
- ✓ Document chain of events
- ✓ Refute false claims
- ✓ Continuous recording
- ✓ Tamper-proof equipment
- ✓ GPS History Mapping
- ✓ No locked-in contracts
- ✓ HD resolution
- ✓ Effective training tool



# ARMORED VEHICLE ( RECORDING SOLUTION )



Our solution for maximum surveillance and 360 views surrounding the vehicle



ARM - 4000



ARM - 4112



360° Total View



ARM - 711-1C/ 2C



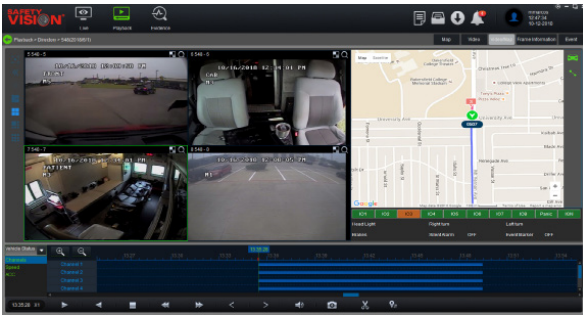
ARM -WQ4 Monitor



Safety Vision  
Body Worn Camera

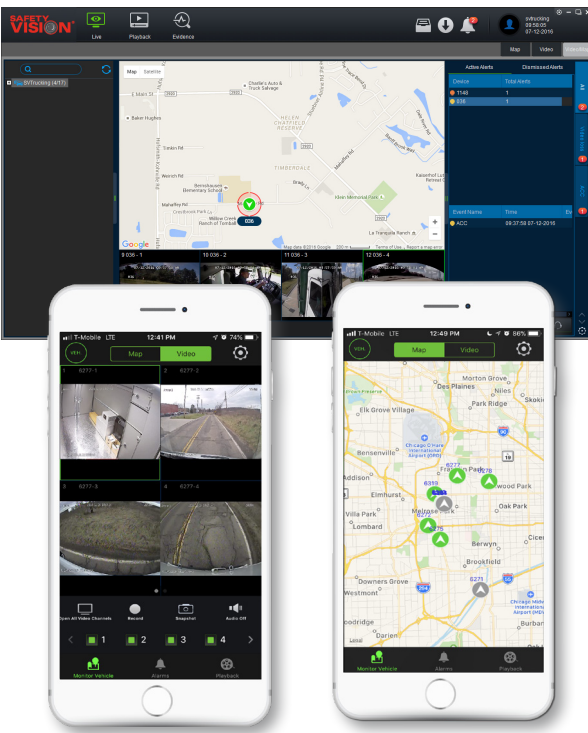


## Safety Vision offers more...



### FORESIGHT PRO SOFTWARE:

- User friendly
- Vehicle Location Search
- Blur / Redact feature
- Zoom capabilities



### LIVE LOOK-IN:

- Live stream video/audio in real time from anywhere in the world
- Playback previously recorded video remotely
- Real time alerts
- Live tracking of whole fleet
- Record directly to your mobile device
- Android & IOS Apps

### WIRELESS DOWNLOADS:

- Save man hours & minimize operational error
- Proactive Health Reports
- Auto Download Events
- Remotely schedule video downloads
- Wirelessly update entire fleets firmware and configuration settings





## CLIENT SUPPORT

The Client Support team serves as the voice of Safety Vision; ensuring an optimal experience through the entire client relationship. They interact with every department in the company to accommodate your needs and deliver on every inquiry or request. Whether you want to place an order, would like more information on a product, or anything in between; our team is here for you.



## TECHNICAL SUPPORT

Our Tech Support team provides training, problem solving, and instruction on all of our solutions and is available to speak with you on the phone (713-929-1164) from the hours of 7AM-6PM CST. The team guarantees to respond within one business day and ensures you are fully equipped to understand and utilize our products to their maximum capabilities. They're dedicated to educating you on our solutions step-by-step and are always available to trouble-shoot any of our solutions.



## SALES SUPPORT

Our sales team brings the promise of our solutions to fruition. The Account Executives seek out individuals from various industries to learn what transportation surveillance issues they face and provide feature-rich technology to conquer these difficulties. As experts in the industry, they're prepared to offer up the best solutions that cater to your specific needs.



## PRODUCT DEVELOPMENT

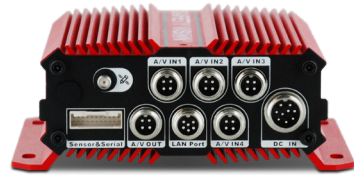
Behind our solutions is the Product Development team who consistently enhances our state-of-the-art products. They study the marketplace for the most technologically advanced products. The team communicates with our clients to learn what innovations can allow them to maximize our solution's performance and put these enhancements into place.

**BEST  
SERVICE**

**SAFETY  
FIRST**



## Observer™ 4000 HVR



Hybrid Video  
Recording



Solid State  
Storage



GPS  
Tracking



Continuous  
Recording

### RECOMMENDED FOR SOLUTIONS UP TO 5 CAMERAS

#### HIGH DEFINITION RECORDING

- Capture clear video evidence on all channels for quality that matters

#### HYBRID VIDEO TECHNOLOGY

- Upgrade to high definition cameras at your own pace

#### DUAL SD CARD SLOTS

- Secure recorded footage onto solid-state storage with no moving parts

#### PASSIVE GPS TRACKING

- Record vehicle's speed and entire route traveled synced with video

#### CUSTOM VEHICLE SENSOR INPUTS

- Record vehicle data synchronized and marked in video

#### WIRELESS CAPABILITY

- Auto-download via Wi-Fi for quick and wireless video retrieval

#### CELLULAR CONNECTIVITY

- Stream live video and track vehicles in real-time

#### SYSTEM HEALTH REPORTS

- Receive email alerts on system health status

## Observer™ 4000 HVR



Hybrid Video  
Recording



Solid State  
Storage



GPS  
Tracking



Continuous  
Recording

### RECOMMENDED FOR SOLUTIONS UP TO 5 CAMERAS

#### HIGH DEFINITION RECORDING

- Capture clear video evidence on all channels for quality that matters

#### H.265 VIDEO COMPRESSION

- High quality video with smaller file sizes and significantly lower bandwidth costs

#### DUAL SD CARD SLOTS

- Secure recorded footage onto solid-state storage with no moving parts

#### PASSIVE GPS TRACKING

- Record vehicle's speed and entire route traveled synced with video

#### CUSTOM VEHICLE SENSOR INPUTS

- Record vehicle data synchronized and marked in video

#### WIRELESS CAPABILITY

- Auto-download via Wi-Fi for quick and wireless video retrieval

#### CELLULAR CONNECTIVITY

- Stream live video and track vehicles in real-time

#### SYSTEM HEALTH REPORTS

- Receive email alerts on system health status



# Observer™ 4112 HVR



Hybrid Video Recording



GPS Tracking



Triggered Events



Wireless Downloading



The 4112 HVR is our most widely used HD recorder that never fails to perform, offering anywhere from 25-50% reduction in cost of the overall solution compared to an IP based system.

## RECOMMENDED FOR SOLUTIONS UP TO 12 CAMERAS

### HIGH DEFINITION RECORDING

- Capture clear video evidence on all channels for quality that matters

### HYBRID VIDEO TECHNOLOGY

- Upgrade to high definition cameras at your own pace

### HIGH CAPACITY STORAGE

- Store up to 2 TBs of high definition recorded video

### PASSIVE GPS TRACKING

- Record vehicle's speed and entire route traveled synced with video

### CUSTOM VEHICLE SENSOR INPUTS

- Record vehicle data synchronized and marked in video

### WIRELESS NETWORKING

- Auto-download via Wi-Fi for quick and wireless video retrieval

### CELLULAR CONNECTIVITY

- Stream live video and track vehicles in real-time

### SYSTEM HEALTH REPORTS

- Receive email alerts on system health status

# Observer™ 4116 NVR Recorder



High definition recording



Wireless & Cellular Capability



Built-in GPS



Event Marking Sensors

## RECOMMENDED FOR SOLUTIONS UP TO 16 CAMERAS

### POWERFUL HIGH DEFINITION SURVEILLANCE

- Capture premium quality images with superior clarity in full high definition resolution

### MASSIVE STORAGE CAPACITY

- Dual drives for double the storage space

### PASSIVE GPS TRACKING

- Record vehicle's speed and entire route traveled synced with video

### CUSTOM VEHICLE SENSOR INPUTS

- Record vehicle data synchronized and marked in video

### WIRELESS NETWORKING

- Auto-download via Wi-Fi for quick and wireless video retrieval

### CELLULAR CONNECTIVITY

- Stream live video and track vehicles in real-time

### SYSTEM HEALTH REPORTS

- Receive email alerts on system health status

### NEXT GENERATION

- Upgrade to new IP technology for top quality performance

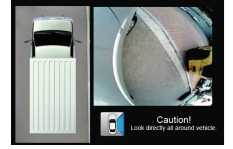
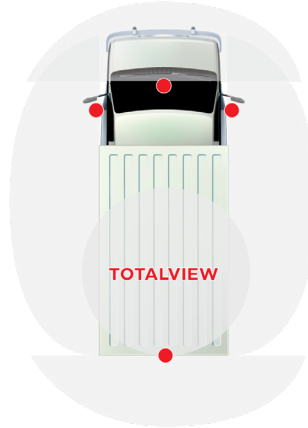
## HD Cameras & Monitor Options



# TotalView Exterior High Definition 360° Birdseye

## TotalView Kit

- LED7-TQ High Definition Touch Screen Monitor
- Four HD wide-angle cameras with cables





## 41 AHD Cameras



Built-In  
Microphone



Analog High  
Definition (AHD)



Threaded  
Connectors



Day/Night  
Performance



### RECOMMENDED FOR FORWARD AND CABIN CAMERA SOLUTIONS

#### HIGH DEFINITION PERFORMANCE

- Record sharper images at an affordable price

#### BUILT-IN MICROPHONE

- Capture clear audio synced with recorded video

#### MINI-DOME DESIGN

- Maximize available space with camera's compact size

#### NIGHT VISION

- View video no matter the time of day or lighting condition

#### MOBILE-RATED HOUSING

- Vibration-proof and tamper-resistant enclosure

#### THREADED COLLAR CONNECTORS

- Cables screw-lock to form a solid connection

## 630 HD



Wide Angle



Day/Night  
Performance



Built-In  
Microphone



Threaded  
Connectors



### RECOMMENDED FOR EXTERIOR AND REAR-VIEW CAMERA PLACEMENT

#### ULTRA WIDE VIEWING ANGLE

- Provides a view three traffic lanes wide behind the vehicle

#### HIGH DEFINITION PERFORMANCE

- Record sharper images at an affordable price

#### BUILT-IN MICROPHONE

- Capture clear audio synced with recorded video

#### NIGHT VISION

- View video no matter the time of day or lighting condition

#### HEAVY-DUTY RUGGED HOUSING

- Strong and reliable durability for long-lasting performance

#### THREADED COLLAR CONNECTORS

- Cables screw-lock to form a solid connection



## CP4 Quad Monitor



Touch Screen Monitor



Integrated Panic Button



Menu Control



Built-In Speaker

### RECOMMENDED MONITOR FOR USE WITH OBSERVER RECORDERS

#### TOUCH-SCREEN DISPLAY

- Quick and easy operation

#### MULTIPLE VIEWING MODES

- Single view, quad view, and 9-camera display mode

#### AUTOMATIC TRIGGERS

- Displays back-up camera when in reverse gear

#### INTEGRATED PANIC BUTTON

- Manually trigger an event and mark critical video

#### IMMEDIATE PLAYBACK

- Built-in speaker for reviewing recorded files in the field

#### DVR CONTROL PANEL

- Configure recorder, view diagnosis information, access system logs, event logs and other system details

## LED7-TQ - HD Quad Monitor



High Definition Imaging



Mirror Image



Built-In Speaker



Touch Screen Monitor

### RECOMMENDED FOR SOLUTIONS UP TO 4 CAMERAS

#### HIGH DEFINITION PICTURE DISPLAY

- Receive the clearest and most accurate views on-screen

#### QUAD-VIEW MONITOR

- Multiple display options for single, split, triple and quad-view

#### AUTOMATIC TRIGGERS

- Instantly display a camera's view full screen

#### MIRROR IMAGING

- Auto-switch to mirror image for rear view camera applications

#### BUILT-IN SPEAKER

- See AND hear all activity in a camera's range with adjustable volume settings

#### TOUCH-SCREEN CONTROL

- Quickly and easily navigate through all functions and operations



## AHD Wide View Camera



Wide Angle



Day/Night Performance



Built-In Microphone



Threaded Connectors

### RECOMMENDED FOR INTERIOR CAMERA PLACEMENTS

#### WIDE FIELD OF VIEW

- Superior coverage with fewer cameras

#### HIGH DEFINITION PERFORMANCE

- Record sharper images at an affordable price

#### BUILT-IN MICROPHONE

- Capture clear audio synced with recorded video

#### NIGHT VISION

- View video no matter the time of day or lighting condition

#### MOBILE-RATED HOUSING

- Vibration-proof and tamper-resistant enclosure

#### THREADED COLLAR CONNECTORS

- Cables screw-lock to form a solid connection

## DualCam FHD



Day/Night Performance



High Definition Performance



Built-In Microphone



Threaded Connectors

### RECOMMENDED FOR INTERIOR AND WINDSHIELD CAMERA PLACEMENT

#### 2-IN-1 CAMERA COMBO

- Forward-facing windshield camera and cabin camera built into a single mount

#### HIGH DEFINITION PERFORMANCE

- Record sharper images at an affordable price

#### BUILT-IN MICROPHONE

- Capture clear audio synced with recorded video

#### NIGHT VISION

- View video no matter the time of day or lighting condition

#### MOBILE-RATED HOUSING

- Vibration-proof and tamper-resistant enclosure

#### THREADED COLLAR CONNECTORS

- Cables screw-lock to form a solid connection



# CLOUD SERVICES



Safety Vision's Cloud Services is our subscription-based solution for managing and hosting your data. We alleviate your need to devote time and money to administer and develop your data assets and are engineered to your operations.

## OUR CLOUD SERVICES:

### SAFETY & SECURITY - OUR #1 PRIORITY

- 24/7/365 access to video
- 99.999999999% uptime rating - so your data is always available
- Compliant to your core security requirements\*\*

### COST SAVINGS

- Reduce IT cost and overhead
- Low capital expense
- No cost for server license or software upgrades

### FLEXIBILITY

- Scalable to your organization's needs - whether it be event-based or complete archives
- Add vehicles as you go
- WiFi and/or cellular network required

\*\*ASIP HDS [France], C5 [Germany], Cyber Essentials Plus [UK], DoD SRG, ENS High [Spain], FedRAMP, FIPS, IRAP [Australia], ISO 9001, ISO 27001, ISO 27017, ISO 27018, K-ISMS [Korea], MTCS [Singapore], PCI DSS Level 1, SEC Rule 17-a-4(f), SOC 1, SOC 2, SOC 3, TISAX, Argentina Data Privacy, BC FOIPPA, CCPA, CISPE, CLOUD Act, FERPA, GDPR, GLBA, HIA [Alberta, Canada], HIPAA, HITECH, IRS 1075, ITAR, NB PHIPAA [New Brunswick], PDPA - 2010 [Malaysia], PDPA - 2012 [Singapore], PHIA [Nova Scotia, Canada], PHIPA [Ontario, Canada], PIPEDA [Canada], Privacy Act [Australia], Privacy Act [New Zealand], Spanish DPA Authorization, U.K. DPA - 1988, VPAT / Section 508, CIS, CJIS, CSA, EU-US Privacy Shield, FFIEC, FISC, FISMA, G-Cloud [UK], GxP (FDA CFR 21 Part 11), ICREA, MITA 3.0, MPAA, NIST, Uptime Institute Tiers, UK Cloud Security Principles



# Key Industry Markets



## MASS TRANSIT

The solutions for mass transit offer increased safety and heightened awareness for passengers and drivers. Our cameras and recorders work together to capture every angle in and around the vehicle for the entire route. Our suite of products are future-proof, user- and budget-friendly, and offer a variety of accessories to meet your needs.



## FIRST RESPONDERS

With as much as First Responders do, Safety Vision is driven to alleviate the pressure of managing multiple surveillance systems. Our solutions are guaranteed to offer unified security, empower responders to be proactive in the chain of events that follow an alert, and provide full documentation of the transition to and from the scene.



## STUDENT TRANSPORTATION

Increased student safety is a crucial motivator in developing solutions for student transportation. Our systems are built to solve a number of hardships faced in the industry including, enforcing stop-arm violation laws, heightened on-board security, and safely maneuvering the vehicle.



## ON AND OFF HIGHWAY TRUCKS

Protecting your investment is a primary focus of the solutions we offer for tractor trailers. Our products provide total coverage surveillance for your vehicle. In our cost-effective system you gain extensive security, collision avoidance, a complete view of your vehicle, and can reduce liabilities.



## LAW ENFORCEMENT

The products created for law enforcement provide comprehensive solutions for the large amount of difficulties officers face; in a unified system. Not only do our products streamline video recording and downloading, but they minimize the stress of maintaining multiple surveillance systems by integrating in-car systems and body cameras together.



## TOWING & RECOVERY

The innovative and heavy-duty solutions created for tow and recovery provide crystal clear views of the entire area surrounding the vehicle and allow you to reap the benefits of safely protecting your investment at a budget-friendly cost. With just one purchase you can enhance driver visibility, have indisputable evidence for court, and optimize operational efficiency.



# Key Industry Markets



## FIRE / ARFF

The solutions created for fire-related emergency responders provide heightened awareness in their fast-paced lifestyle. Our durable, weather-proof cameras allow the drivers to quickly get to their destination while significantly improving public alertness; keeping an eye on their surroundings in-route to and from the scene has never been easier.



## ARMORED VEHICLE

Armored vehicles house extremely valuable cargo which requires top-notch surveillance and security for the assets and driver. With this in mind, Safety Vision has created a comprehensive solution that protects the inventory and driver through continuous recording, GPS tracking, and on-board live look-in.



## INMATE TRANSPORT

Protecting the corrections officers is imperative to the solutions created for inmate transportation. Our systems offer complete visual and audio recording in and around the vehicle, geo-fencing, and live look-in ensuring any conversations or movement is documented.



## HEAVY DUTY VEHICLES

Heightened awareness and improved total visibility are vital components when Safety Vision designed our heavy-duty vehicle solutions. Our durable and long-lasting exterior cameras provide complete vehicle coverage for maneuvering the surrounding area, maintain continuous recording for incident reporting, and enhance driver safety through increased awareness.



## WASTE / REFUSE

The foundation of waste and refuse vehicle solutions are heightened surveillance and security. Our durable products provide precise and broad views of the area in and around the vehicle and are built to optimize productivity, validate driving routes, and increase driver visibility.



## CONCRETE MIXER

The heavy-duty solutions created for concrete trucks enhance driver visibility surrounding the truck; ensuring they off-load the concrete in the appropriate spot and increase the overall safety of everyone involved. The on-board software continuously records entire shifts which reduces room for error and equips you with irrefutable evidence to dispute false claims.



# ABOUT US

## Your Mobile Surveillance Solution Company

With more than 25 years of experience, Safety Vision, LLC is one of the most recognized partners for advanced mobile video surveillance products. We pride ourselves on comprehensive solutions, future-proofing our products, and serving the needs of our clients. In turn, we have proven results in simplifying surveillance systems and strengthening transportation safety.

Our solutions are geared towards maximizing operational efficiency, increasing driver awareness, unifying surveillance systems, protecting assets/cargo, and most importantly – enhancing safety for drivers and riders. These core values stem from our commitment to problem solve the challenges that come with transportation. We consistently communicate with our clients to learn what their hardships are and develop or enhance our products based on those insights. It is our goal to eliminate or decrease the number of issues our customers face.

## Our Industries

Since 1993, we have sold over a billion dollars in mobile surveillance products to a wide variety of industries. These include mass transit, law enforcement, student transportation, commercial vehicles, and more in both public and private sectors. While the purpose for purchasing our products vary between each industry, the decision to choose Safety Vision as your vendor remains the same: we deliver on our promise to accommodate your transportation difficulties with user- and budget-friendly remedies.

## Your Visionaries

Headquartered in Houston, Texas, our personnel of over 100 employees is highly driven and knowledgeable. All of our departments are hands-on and passionate about advancing our solutions to ensure we produce top-quality products. Our 40,000 sq. foot building is equipped with an expansive warehouse that houses over \$15 million dollars of inventory. Our Visionaries are dedicated to working hard and find reward in our day-to-day operations. With over a dozen nationwide satellite offices and 6 international locations, we are quickly expanding our business to provide solutions worldwide.

To learn more about our solutions and how we can tailor our products to meet your needs, request more information at [www.safetyvision.com](http://www.safetyvision.com) or call 800-880-8855 today!

“Safety Vision started when the mobile video camera business was in its infancy. We’ve matured with the industry and today offer the most technologically advanced yet user friendly fleet vehicle camera systems available. For 27 years, we’ve been helping businesses like yours save money and lives. Business doesn’t get more important than that.”

–Bruce Smith, President and CEO  
Safety Vision















MOBILE VIDEO SURVEILLANCE SOLUTIONS

**Servicing Our Customers  
World Wide**

**For More Information Please Contact  
One of Our  
Expert Account Representatives**

**Toll Free: 833.566.2303**  
**[www.safetyvision.com/armored-vehicle](http://www.safetyvision.com/armored-vehicle)**  
**[armoredsales@safetyvision.com](mailto:armoredsales@safetyvision.com)**  
**6100 W. Sam Houston Pkwy. N.**  
**Houston, TX 77041**